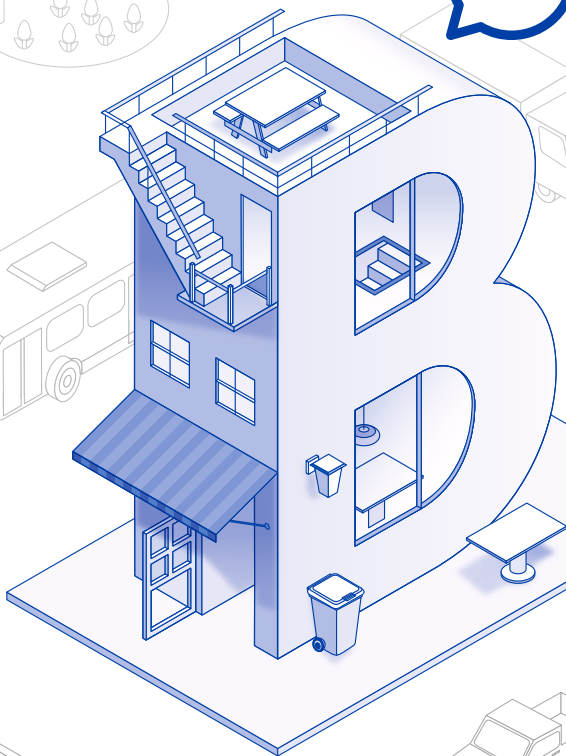


# a tailor-made solution

## Personalized Payment Account

Group your municipal taxes and pay by interest-free instalments



**BASE**

GESTIÓ D'INGRESSOS



Diputació Tarragona

### all in a single account

BASE's Personalised Payment Account allows all the different municipal taxes to be centralized in a single account, dividing payments into nine monthly instalments.



### interest-free

The division of payments into nine instalments, from February to October, eases the fiscal burden on taxpayers at certain times of the year and does not entail any interest payments.



### better control

Taxpayers are sent detailed information about the total amount payable and the amounts and due dates of the different instalments.



### which taxes?

Property tax (IBI), road tax (IVTM) and trade tax (IAE). It can also include regular taxes of a community nature (permanent road access to properties, rubbish collection, etc.), apart from the tax on the water supply.



manage your formalities online at  
[www.base.cat](http://www.base.cat)

### why personalize it?

Because you can group all your taxes, or specify the ones you want to leave out at the time you register for the Personalized Payment Account service. Furthermore, the same account can be used to pay taxes issued by different town councils.



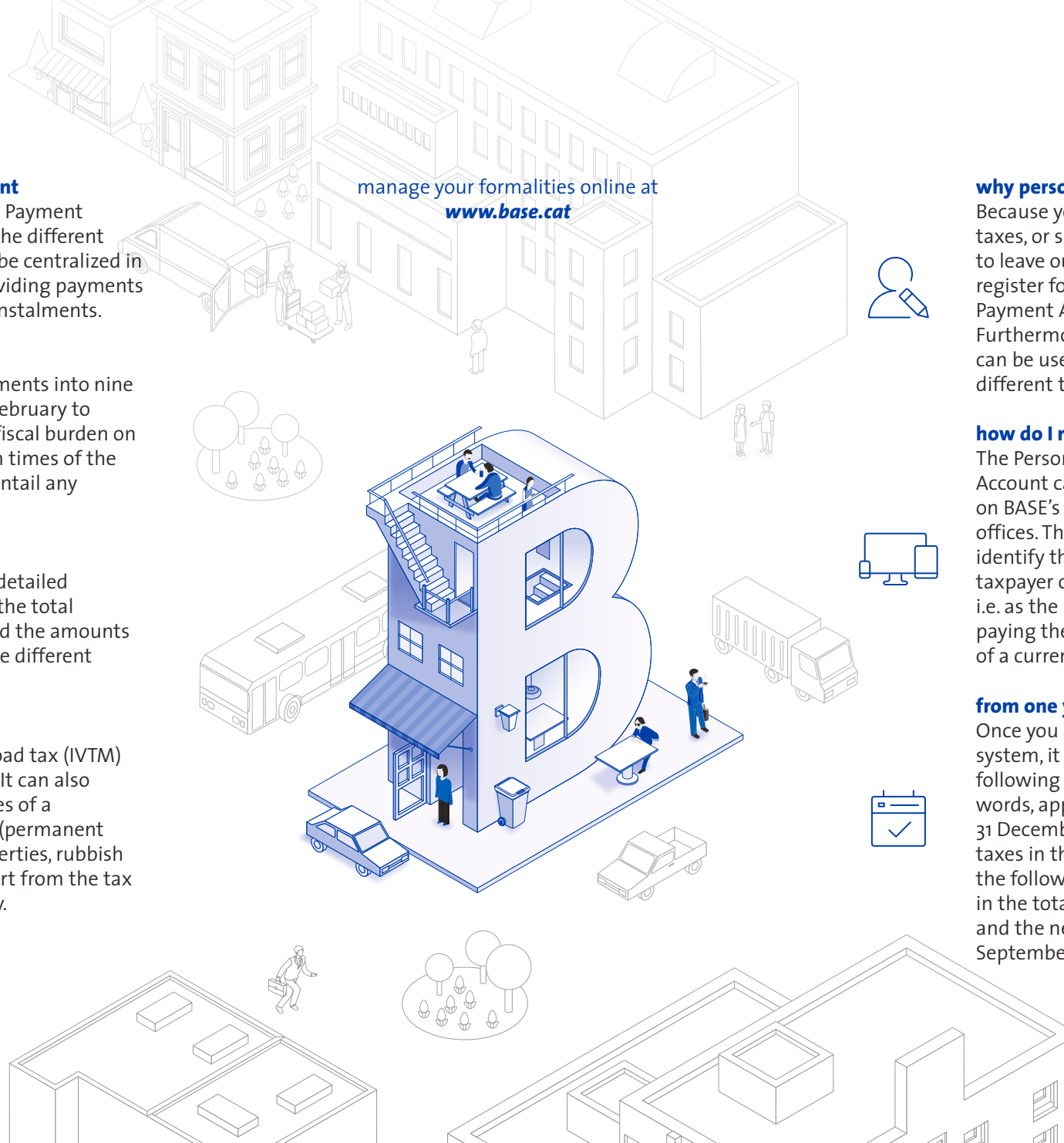
### how do I request it?

The Personalized Payment Account can be requested online on BASE's website or in any of its offices. The interested party must identify themselves as the taxpayer of the taxes in question, i.e. as the person responsible for paying them, and provide details of a current account in their name.



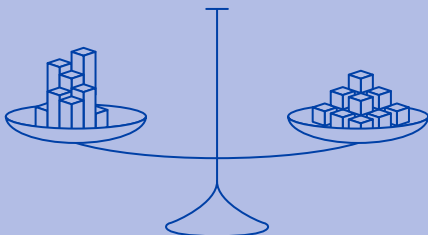
### from one year to the next

Once you are registered in the system, it will go into effect for the following financial year. In other words, applicants accepted up to 31 December will start paying their taxes in this way from February the following year. Any differences in the total due between one year and the next will be settled in September or October.



**BASE-Gestió d'Ingressos** is the independent body of Tarragona Provincial Council responsible for managing revenue on behalf of town councils, independent bodies and other public authorities. It currently performs this service for the majority of municipalities in the counties of Tarragona.

View the full list at  
[\*\*www.base.cat\*\*](http://www.base.cat)





Aquí **:Diputació**

*[www.base.cat](http://www.base.cat)*